



Industrial Lubrication Pumps Hose Reels and Accessories



Grease Control Handle
with Digital Meter



Hose Reels



Oil and Grease
Barrel Pumps



Trucks, Dollies, Bases



Manual Pumps

Standard Duty Oil Transfer Pumps

5 G.P.M.

2" Air motor (51mm) - 3" Stroke (75mm)



1:1 Ratio PM2 Transfer Pumps - Oil

Ideal for transferring high volumes of all types of oils (mineral oil, motor oil, hydraulic oil, ATF, cutting oil, diesel, kerosene, etc.) through short runs with small pressure drops.

Highly efficient and reliable, very low noise level, low air consumption. Built in exhaust mufflers, standard.

Patented double-action pump design assures even flow of fluid only 3 parts in the air motor—quick and easy maintenance.

Precision corrosion-resistant parts, high alloy materials, quality seals. Heavy-duty, distortion-free pump tubes.

Built in port for optional F609007 pressure relief valve.

PM2 Bare Oil Pump Models

Part #	Description
F351120	Stub Pump
F351120 + F910411	16 Gallon Drum Pump
F352120	55 Gallon Drum Pump

PM2 Technical Data

Max. air pressure	140 psi (10 bar)
Min. air pressure	20 psi (1.5 bar)
Avg. air cons.*	5.3 scfm/min.(150NL/min.)
Max. capacity at 150cpm**	5.3 gal./min. (20L/Min.)
Max. outlet pressure (140 psi air)	140psi (10 bar)
Air motor diameter	2" (51 mm)
Air inlet thread	1/4"NPT(F)
Pump outlet thread	3/4"NPT(F)
Fluid inlet thread (Stub pump only)	1"NPT(F)
Bung adapter thread	2" (M)

* Air consumption with 90 psi (6 bar) air inlet pressure and 150 cycles per minute.

** 13.7 gal/min(52 L/min) maximum free delivery at 100 psi (7 bar).



1:1 PM2 Oil Pump Packages

Model F230 Universal Stub Pump

Includes the following:

F351120	1:1 Ratio pump with bung adapter
F904	Connecting hose installation hook-up kit

For 16gal open top drum (Former Model F226)

Order the following separate:

F356120	1:1 Ratio pump with bung adapter
F904	Connecting hose installation hook-up kit

For 55Gal For 55 gal. open top drum (Formally F228)

Order the following separate:

F352120	1:1 Ratio pump with bung adapter
F904	Connecting hose installation hook-up kit

Model F226



Model F228

NOTE: Two-year warranty standard on above pumps. Standard 2" bung bushing supplied with above pumps

Medium Pressure Oil Pumps for Transfer & Distribution Systems

3 G.P.M.

2" Air motor (51mm) - 3" Stroke (75mm)



3:1 Ratio PM2 Transfer Pump - Oil

Ideal for use in oil distribution systems that include pipe lines, hose reels and meters. For portable and stationary systems, for all types of oils and gear oils.

Highly efficient and reliable, very low noise level, low air consumption. Built in exhaust mufflers, standard.

Patented double-action pump design assures even flow of fluid only 3 parts in the air motor—quick and easy maintenance.

Precision corrosion-resistant parts, high alloy materials, quality seals. Heavy-duty, distortion-free pump tubes. Built in port for optional F609007 pressure relief valve.

PM2 Bare Oil Pump Models

Part #	Description
F353120	Stub Pump
F358120	16 Gallon Drum Pump
F354120	55 Gallon Drum Pump

PM2 Technical Data

Max. air pressure	140 psi (10 bar)
Min. air pressure	20 psi (1.5 bar)
Avg. air cons.*	6.4 scfm (180 NL/min)
Max. capacity @ 200cpm**	2.7 gal./min. (10L/Min.)
Max. outlet pressure (140 psi air)	420psi (30 bar)
Air motor diameter	2" (51 mm)
Air inlet thread	1/4"NPT(F)
Fluid inlet thread (Stub pump only)	3/4"NPT(F)
Pump outlet thread	1/2"NPT(F)
Bung adapter thread	2" (M)

* Air consumption with 90psi(6 bar) air inlet pressure and 200 cycles per minute.

** 9.3 gal/min(35L/min) maximum free delivery at 100 psi (7 bar).

Model F353120



3:1 PM2 Oil Pump Packages

Model F202 For 16 gal. bung type drum.

Includes the following:

F358120 3:1 Ratio pump with cover mounting adapter

F904 Connecting hose hook-up kit.

Model F204 For 16 gal. open top drum.

Includes the following:

F358120 3:1 Ratio pump with cover mounting adapter

F1936 Deluxe Drum cover for 16 gal. drum.

F904 Connecting hose hook-up kit.

Model F222 For 55 gal. bung type drum.

Includes the following:

F354120 3:1 Ratio pump with 2" bung bushing.

F904 Connecting hose hook-up kit.

For 55 gal. open top drum (Former Model F224)

Order the following separate:

F354120 3:1 Ratio pump with cover mounting adapter

F1938 Deluxe Drum cover for 55 gal. drum.

F904 Connecting hose hook-up kit.

Model F202



Model F222



NOTE: Two-year warranty standard on above pumps. Standard 2" bung bushing supplied with above pumps.

Standard Duty Medium Pressure Oil Pumps

3 G.P.M.

3.5" Air motor (88mm)- 4" Stroke (100mm)



5:1 Ratio PM4 Pumps - Oil

Heavy-duty pumps designed to pump high volumes of oil, even those of higher viscosity (SAE 140), through long lines, hose reels and meters. Capable of serving several outlets simultaneously.

Patented double-action pump design assures even flow of fluid. Low noise level, efficient, reliable, heavy-duty design. Built in exhaust mufflers, standard.

Precision corrosion-resistant parts, high alloy materials, quality seals. Heavy-duty, distortion-free pump tubes.

Muffled exhaust, no icing. Long stroke means fewer cycles for less wear and longer pump life. In a class by itself, hi-tech, rugged but simple design. Built in port for optional F609007 pressure relief valve.

PM4 Bare Oil Pump Models

Part #	Description
F347120	Stub Pump
F347120 + F910411	16 Gallon Drum Pump
F348120	55 Gallon Drum Pump

PM4 Technical Data

Max. air pressure	140 psi (10 bar)
Min. air pressure	20 psi (1.5 bar)
Avg. air consumption*	14scfm (400NL/min.)
Max. capacity @ 125cpm**	2.7 gal./min. (10L/Min.)
Max. pressure output(140 psi air)	700psi (50 bar)
Air motor diameter	3-1/2" (88 mm)
Air inlet thread	3/8"NPT(F)
Pump outlet thread	3/4"NPT(F)
Fluid inlet thread(Stub pump only)	1"NPT(F)
Bung adapter thread	2" (M)

* Air Consumption with 90psi (6 bar) air inlet pressure and 125 cycles per minute.

** 6.6 gal/min(25L/min) maximum free delivery at 100psi (7bar).



Model F347120

5:1 PM4 Oil Pumps

For 16 gal. bung type drum (Former Model F402)

Order the following:

Model F347520 5:1 Ratio pump with 2" bung bushing

Model F906 Connecting hose hook-up kit.

For 16 gal. open top drum (Former Model F404)

Order the following:

Model F347520 5:1 Ratio pump with cover mounting adapter

Model F1936 Drum cover for 16 gal. drum.

Model F906 Connecting hose hook-up kit.

For 55 gal. bung type drum (Former Model F422)

Order the following:

Model F348120 5:1 Ratio pump with 2" bung bushing

Model F906 Connecting hose hook-up kit.

For 55 gal. open top drum (Former Model F424)

Order the following:

Model F348120 5:1 Ratio pump with cover mounting adapter

Model F1938 Drum cover for 55 gal. drum.

Model F906 Connecting hose hook-up kit.

Model F348120



NOTE: Two-year warranty standard on above pumps. Standard 2" bung bushing supplied with above pumps.

Heavy Duty Medium Pressure Oil Pumps

3.2 gal/min. (12 Liter/min.)

3.15" Air motor (80mm) - 3.15" Stroke (80mm)



5:1 Ratio PM35 Heavy Duty Medium Pressure Pumps - Oil

Double acting air operated medium pressure delivery pump for oil distribution applications. Built in port for optional (PN F609007) pressure relief valve. Bung adaptor.

Efficient and reliable—minimum maintenance.

PM35 Bare Pump Models

Part #	Description
F535531	Stub Pump with Bung Adapter
F535581	Stub Pump
F535511	55 Gal. Drum Pump w/Bung Adapter

PM35 Technical Data

Max. air pressure	175 psi (12 bar)
Min. air pressure	30 psi (2 bar)
Avg. air consumption*	12.4 scfm (350 NL/min.)
Max. capacity @ 80cpm**	3.2 gal./min. (12L/Min.)
Max. pressure output(175psi air)	875 psi (60 bar)
Air motor diameter	3-1/8" (80 mm)
Suction strain dia.(pump foot)	2" (50 mm)
Air inlet thread	3/8"NPT(F)
Pump outlet thread	1/2"NPT(F)
Fluid inlet thread	1-1/2"NPT(F)
Bung adapter thread	2" (M)

* Air Consumption with 72psi (5 bar) air inlet pressure and 80 cycles per minute.

** 8 gal/min(30L/min) maximum free delivery at 100psi (7bar).

5:1 PM35 Oil Service Packages

Model F535531A Universal Stub Pump

Includes the following:

Model F535531 5:1 Ratio pump with bung bushing

Model F916 Connecting hose installation hook-up kit.

Model F535511A For 250 Gal work bench type tank and 55 Gal drums

Includes the following:

Model F535511 5:1 Ratio pump with bung bushing

Model F916 Connecting hose installation hook-up kit.



Model F535511A

NOTE: Two-year warranty standard on above pumps. Standard 2" bung bushing supplied with select above pumps.

Heavy Duty High Pressure Oil Pumps

1.9 gal/min. (7 Liter/min.)

3.15" Air motor (80mm) - 3.15" Stroke (80mm)



8:1 Ratio PM35 Heavy Duty High Pressure Pumps - Oil

Double acting air operated high pressure and reliable delivery pump for oil distribution applications. Built in port for optional (PN F609008) pressure relief valve. Cast iron pump body for high pressure operation.

Efficient and reliable—minimum maintenance.

PM35 Bare Pump Models

Part #	Description
F535831	Stub Pump w/Bung Adapter
F535881	Stub Pump
F535811	55 Gal. Drum Pump with Bung Adapter

PM35 Technical Data

Max. air pressure	175 psi (12 bar)
Min. air pressure	30 psi (2 bar)
Avg. air consumption*	12.4 scfm (350 NL/min.)
Max. capacity @ 80cpm**	1.9 gal./min. (7L/Min.)
Max. pressure output (175psi air)	1,400 psi (96 bar)
Air motor diameter	3-1/8" (80 mm)
Suction strain dia. (pump foot)	1-2/3" (42 mm)
Air inlet thread	3/8"NPT(F)
Pump outlet thread	1/2"NPT(F)
Fluid inlet thread	1"NPT(F)
Bung adapter thread	2" (M)

* Air Consumption with 72psi (5 bar) air inlet pressure and 80 cycles per minute.

** 4.5 gal/min(17L/min) maximum free delivery at 100psi (7bar).

8:1 PM35 Oil Service Packages

Model F535831A Universal Stub Pump

Includes the following:

Model F535831 8:1 Ratio pump with bung bushing

Model F916 Connecting hose installation hook-up kit.

Model F535811A For 250 Gal work bench type tank and 55 Gal drums

Includes the following:

Model F535811 8:1 Ratio pump with bung bushing

Model F916 Connecting hose installation hook-up kit.



Model F535831A

NOTE: Two-year warranty standard on above pumps. Standard 2" bung bushing supplied with select above pumps.

Heavy Duty Oil Pumps - Flange Mounted Pump

12 G.P.M.

4.5" Air motor (115mm)- 4" Stroke (100mm)



3:1 Ratio PM45 Pumps - Oil

Double acting air operated medium pressure and high delivery pump for large volume transfer applications. Built in port for optional F609007 pressure relief valve. Flange mounted pump.

Fluids Handled are Synthetic and mineral based oil, Hydraulic oil, Gear lube & Transmission fluid.

Markets served are Construction, Mining, Fleets, Railroad, Marine and In-Plant Oil Distribution.

PM45 Bare Oil Pump Models	
Part #	Description
F536331	Universal Stub Pump

PM45 Technical Data

Max. air pressure	170 psi (12 bar)
Min. air pressure	20 psi (1.5 bar)
Avg. air consumption*	28scfm (800NL/min.)
Max. capacity @ 80cpm**	12 gal./min. (45L/Min.)
Max. pressure output(140 psi air)	510psi (36 bar)
Air motor diameter	4-1/2" (115 mm)
Air inlet thread	1/2"NPT(F)
Pump outlet thread	3/4"NPT(F)
Fluid inlet thread(Stub pump only)	1-1/2"NPT(F)

* Air Consumption with 72psi (5 bar) air inlet pressure and 80 cycles per minute.

** 32 gal/min(120L/min) maximum free delivery at 100psi (7bar).

7 G.P.M.

4.5" Air motor (115mm)- 4" Stroke (100mm)



6:1 Ratio PM45 Pumps - Oil

Double action air operated medium pressure pump for large system with simultaneous operation outlets that require a high delivery pump. Built in port for optimal F609007 pressure relief valve. Flange mounted pump.

Fluids Handled are Synthetic and Mineral Based Oil, Hydraulic Oil, Gear Lube & Transmission Fluid.

Markets served are Large Auto & Truck Dealers, Construction Equipment Maintenance, Mining Equipment Maintenance, Large Fleets, Railroad & Mass Transit Maintenance, Marine & In Plant Oil distribution.

PM45 Bare Oil Pump Models	
Part #	Description
F536631	Universal Stub Pump

PM45 Technical Data

Max. air pressure	170 psi (12 bar)
Min. air pressure	20 psi (1.5 bar)
Avg. air consumption*	29scfm (830NL/min.)
Max. capacity @ 80cpm**	6.6 gal./min. (25L/Min.)
Max. pressure output(140 psi air)	1020psi (72 bar)
Air motor diameter	4-1/2" (115 mm)
Air inlet thread	1/2"NPT(F)
Pump outlet thread	3/4"NPT(F)
Fluid inlet thread(Stub pump only)	1-1/2"NPT(F)

* Air Consumption with 72psi (5 bar) air inlet pressure and 80 cycles per minute.

** 25 gal/min(95L/min) maximum free delivery at 100psi (7bar).

NOTE: Two-year warranty standard on above pumps.

Heavy Duty Oil Pumps - Flange Mounted Pump

4 G.P.M.

4.5" Air motor (115mm)- 4" Stroke (100mm)



10:1 Ratio PM45 Pumps - Oil

Double acting air operated moderate pressure pump for very large oil systems or when low air pressure or cold temperatures would limit pump performance. Built in port for optional F609008 pressure relief valve. Flange mounted pumps. Pump F536011 can also use bung adaptor F360006 for bung mounting.

Fluids Handled are Synthetic and Mineral Based Oil, Hydraulic Oil, Gear Lube & Transmission Fluid.

Markets served are Large Auto & Truck Dealers, Construction Equipment Maintenance, Mining Equipment Maintenance, Large Fleets, Lube Trucks, Railroad & Mass Transit Maintenance, Marine & In Plant Oil distribution.

PM45 Bare Oil Pump Models

Part #	Description
F536031	Universal Stub Pump
F536011	55 Gal Drum Pump

PM45 Technical Data

Max. air pressure	170 psi (12 bar)
Min. air pressure	20 psi (1.5 bar)
Avg. air consumption*	30scfm (850NL/min.)
Max. capacity @ 80cpm**	4 gal./min. (15L/Min.)
Max. pressure output (140 psi air)	1700psi (120 bar)
Air motor diameter	4-1/2" (115 mm)
Air inlet thread	1/2"NPT(F)
Pump outlet thread	3/4"NPT(F)
Fluid inlet thread (Stub pump only)	1-1/2"NPT(F)

* Air Consumption with 72psi (5 bar) air inlet pressure and 80 cycles per minute.

** 17.2 gal/min(65L/min) maximum free delivery at 100psi (7bar).



Model F536031

9 G.P.M.

6" Air motor (150mm)- 4" Stroke (100mm)



6:1 Ratio PM60 Pumps - Oil

Double acting air operated medium pressure and high delivery pump, for large installations with simultaneous operation outlets and applications that require large, constant delivery rates. Built in port for optional (PN F609007) pressure relief valve. Flange mounted pump.

PM60 Bare Oil Pump Models

Part #	Description
F537631	Universal Stub Pump

PM60 Technical Data

Max. air pressure	170 psi (12 bar)
Min. air pressure	20 psi (1.5 bar)
Avg. air consumption*	39scfm (1,100NL/min.)
Max. capacity @ 80cpm**	9.25 gal./min. (35L/Min.)
Max. pressure output (140 psi air)	1020psi (72 bar)
Air motor diameter	6" (150 mm)
Air inlet thread	1/2"NPT(F)
Pump outlet thread	3/4"NPT(F)
Fluid inlet thread (Stub pump only)	1-1/2"NPT(F)

* Air Consumption with 72psi (5 bar) air inlet pressure and 80 cycles per minute.

** 26.5 gal/min(100L/min) maximum free delivery at 100psi (7bar).

5 G.P.M.

6" Air motor (150mm)- 4" Stroke (100mm)



12:1 Ratio PM60 Pumps - Oil

Double acting air operated moderate pressure and high delivery pump for very large installation with simultaneous operation outlets or when low air pressure or low temperatures would limit pump performance. Built in port for optional (PN F609008) pressure relief valve. Flange mounted pump.

PM60 Bare Oil Pump Models

Part #	Description
F537131	Universal Stub Pump

PM60 Technical Data

Max. air pressure	170 psi (12 bar)
Min. air pressure	20 psi (1.5 bar)
Avg. air consumption*	41scfm (1,150NL/min.)
Max. capacity @ 80cpm**	5.3 gal./min. (20L/Min.)
Max. pressure output (140 psi air)	2040psi (144 bar)
Air motor diameter	6" (150 mm)
Air inlet thread	1/2"NPT(F)
Pump outlet thread	3/4"NPT(F)
Fluid inlet thread (Stub pump only)	1-1/2"NPT(F)

* Air Consumption with 72psi (5 bar) air inlet pressure and 80 cycles per minute.

** 17 gal/min(L/min) maximum free delivery at 100psi (7bar).

OIL PUMP ACCESSORIES

Installation Hook-up Kits

Model F904

Medium pressure connecting hose installation hook-up kit for PM2 1:1 and 3:1 ratio fluid pumps. Includes the following:

Model F801	5' Air hose, 1/4"NPT (M) both ends
Model F930F04	Quick air coupler 1/4"NPT(F)
Model F933M04	Quick air nipple 1/4"NPT (M)
Model F857	5' medium pressure 3/4"hose 3/4"NPT(M) ends

Model F906

Medium pressure connecting hose installation hook-up kit for PM4 3:1 and 5:1 ratio fluid pumps. Includes the following:

Model F812	5' Air hose, 3/8"NPT (M) both ends
Model F930F06	Quick air coupler 3/8"NPT(F)
Model F933M06	Quick air nipple 3/8"NPT (M)
Model F857	5' medium pressure 3/4"hose 3/4"NPT(M) ends

Model F916

Medium pressure connecting hose installation hook-up kit for PM35 5:1 and 8:1 ratio fluid pumps. Includes the following:

Model F813	5' Air hose, 3/8"NPT (M) both ends
Model F930F06	Quick air coupler 3/8"NPT(F)
Model F933M06	Quick air nipple 3/8"NPT (M)
Model F846	5' medium pressure 1/2"hose 1/2"NPT(M) ends

Model F914

Medium pressure connecting hose installation hook-up kit for PM45 and PM60 fluid pumps. Includes the following:

Model F822	2' Air hose, 1/2"NPT (M) both ends
Model F935F08	Quick air coupler 1/2"NPT(F)
Model F936M08	Quick air nipple 1/2"NPT (M)
Model F857	5' medium pressure 3/4"hose 3/4"NPT(M) ends
Model F1981	90° swivel 1/2"NPTF X 1/2"NPTM
Model F1982	90° swivel 3/4"NPTF X 3/4"NPTM

NOTE: Two-year warranty standard on above pumps.

Oil Pump Accessories Cont.

F1936



F360133



F360006



F418026



F94112023



F244901



F900



F360139



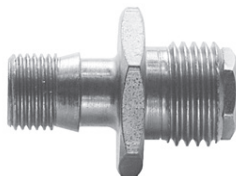
F360132



F360121

Oil Pump Accessories - Covers & Bungs

PM2/PM4 Deluxe Drum Covers	P.N.
16 Gal open top keg	F1936
55 Gal open top drum	F1938
PM45/PM60 Heavy Duty Drum Covers	P.N.
16 Gal open top keg	F418017
55 Gal open top drum	F418026
Bung Mount Adapter	F360133
Bung Bushing Adapters	P.N.
PM2 1:1 & PM4 3:1	F360001
PM2 3:1	F360000
PM4 5:1 & PM35 8:1	F360002
PM35 5:1	F609004
PM45 10:1	F360006
Double tap bushing , 2" (M) x 1-1/2" (F) threads. With a 1/8" NPTF opening for pressure relief return line. Use with 1-1/2" (MM) adapter for PM35 5:1 pumps. Use with 1-1/2" (M) x 1" (M) adapter for PM4 3:1 and 5:1 pumps.	F94112023
Bung Seal Kit. All weather protection bung adapter cover. When placed between the pump and the bung adapter, prevents water passing to the oil container in outdoors applications. For PM2 3:1 and PM4 5:1 pumps.	F244901



Pressure Relief Valves

Model F609007 900 psi

Model F609008 1450 psi

BDI pumps include a 1/4" plug that can be removed and replaced with a pressure relief valve. Relief valves include 36" transparent return tube and 1/4" NPTM fitting.

F609007 is for F2/F4/PM45/PM60

F609008 is for F4/PM45/PM60

Pump Brackets	P.N.
Wall mount bracket for PM2/PM4, 2" NPTF bung opening.	F900
Floor mount bracket for PM2 & PM4 pumps.	F360120
Wall mount bracket for PM35 2" NPTF bung opening.	F360139
Wall mount bracket for PM35 flange mounted pumps.	F360140
Floor mount bracket for PM45 & PM60 flange mounted pumps..	F360121
Wall mount bracket for PM45 & PM60 flange mounted pumps.	F360132

F912



Suction Kits

Use with PM2 and PM4 pumps. Siphon kit consisting of 40" suction tube with foot valve, 2" bung bushing adaptor, 8' spring reinforced transparent hose, 3/4" (F) swivel end, one PM2 - 3:1 pump to hose connector, 3/4" MM and one PM4 - 3:1 and 5:1 pump to hose connector, 3/4" M x 1" M. Suction tube length: 46"	F910
Part No. F912 Siphon kit for wall mount pumps Use with PM2 3:1 and PM4 - 3:1 and 5:1 pumps. Includes the following: Part No. F900: Wall mount bracket. Part No. F910: Siphon kit.	F912
Part No. F926 Suction hose kit for wall mounted pumps Use with PM35, PM45 and PM60 pumps. Includes the following: Part No. F863506: 6' medium pressure 1 1/2" hose, 1 1/2" NPTM both ends, swivel one end. Part No. F2520: Elbow 1 1/2" NPT M x 1 1/2" NPT F. Order bracket F360139 for PM45 pumps or F360132 for PM45 and PM60 pumps separately.	F926

Std Duty Grease Pumps for Transfer & Distribution Systems

21 cu. in./min. (0.7lb./min.)

2.75" Air motor (70mm) - 1.5" Stroke (35mm)



55:1 Ratio PM3 High Pressure Pumps - Grease

High pressure grease pumps handle all types of grease up to and including NLGI 2 directly from 35 lb., 120 lb. and 400 lb. grease containers. For portable and stationary systems that include control handles.

Shovel type self-pumping product piston. Integral intake suction strainer ensures non-fouling operation.

Highly efficient double-action pump design assures even flow of fluid, low noise level and low air consumption. Built in exhaust mufflers, standard.

Efficient and reliable—minimum maintenance.

PM3 Bare Pump Models

Part #	Description
F300	35 lb. Pail Pump
F302	120 lb. Drum Pump
F304	400 lb. Drum Pump

55:1 PM3 Grease Service Packages

For 120LB For 120 lb. open top drum.(Formally F306)

Order the following separate:

Model F302	55:1 Ratio pump with cover mounting adapter
Model F1936	Drum cover for 120 lb. drum.
Model F903	Connecting hose installation hook-up kit.
Model F1108	Hose swivel.

For 400LB For 400 lb. open top drum.(Formally F308)

Order the following separate:

Model F304	55:1 Ratio pump with cover mounting adapter
Model F1938	Drum cover for 400 lb. drum.
Model F903	Connecting hose installation hook-up kit.
Model F1108	Hose swivel.

Model F335
(not shown) For 35 lb. pail.

Includes the following:

Model F300	55:1 Ratio pump with cover mounting adapter
Model F1934	Drum cover for 35 lb. pail.
Model F903	Connecting hose installation hook-up kit.

NOTE: Order follower plates separately.

NOTE: Two-year warranty standard on above pumps. Standard 2" bung bushing supplied with above pumps.

PM3 Technical Data

Max. air pressure	140 psi (10 bar)
Min. air pressure	20 psi (1.5 bar)
Avg. air consumption*	5.8 scfm (165 NL/min.)
Max. delivery**	0.7lb/min. or 21cu.in.(344cc/min)
Max. pressure output (140psi air)	7,700 psi (530 bar)
Air motor diameter	2-3/4" (70 mm)
Suction strain dia. (pump foot)	1.6" (38 mm)
Air inlet thread	1/4"NPT(F)
Pump outlet thread	1/4"NPT(F)(+1/2"-27M conn)
Bung adapter thread	2" (M)

* Maximum air consumption with 90 psi (6 bar) air inlet pressure, NLGI-2 grease at 68 °F (20 °C) and 110 cpm.

** 1.2lb/min or 36cu.in.(590cc/min) maximum free delivery at 100psi (7 bar).



Model F306

Model F308

PM3 Accessories

Size	Follower Plates
35 lb. Pail Pump	F962
120 lb. Drum Pump	F964
400 lb. Drum Pump	F966
Bung Adpt Bushing	Part Number
F300/F302/F304	F2028

Heavy Duty High Pressure Grease Pumps

36 cu. in./min. (1.1 lb./min.)

3.15" Air motor (80mm) - 3.15" Stroke (80mm)



60:1 Ratio PM35 Heavy Duty High Pressure Pumps - Grease

Heavy-Duty double acting pumps that combine high pressure (60:1 pressure ratio) and volume delivery. Recommended for use in distribution and greasing systems that include pipe lines, hose reels, etc. with up to 2 simultaneous use outlets even though the number of outlets in the system can be higher. Very reliable pump, it has a removable screen filter at the grease intake for eliminating dirt and impurities that could damage the pump, and a built in filter at the air inlet connection. Includes a height adjustable 2" NPTM bung adaptor.

Efficient and reliable—minimum maintenance.

PM35 Bare Pump Models

Part #	Description
F530631	35 lb. Pail Pump
F530621	120 lb. Drum Pump
F530611	400 lb. Drum Pump

PM35 Technical Data

Max. air pressure	145 psi (10 bar)
Min. air pressure	20 psi (1.5 bar)
Avg. air consumption*	15.9 scfm (450 NL/min.)
Max. delivery**	1.1lb./min. or 36cu.in.(540cc/Min.)
Max. pressure output (140psi air)	8,700 psi (600 bar)
Air motor diameter	3-1/8" (80 mm)
Suction strain dia. (pump foot)	1.4" (35 mm)
Air inlet thread	3/8"NPT(F)
Pump outlet thread	3/8"NPT(F)
Bung adapter thread	2" (M)

* Maximum air consumption with 70 psi (5 bar) air inlet pressure, NLGI-2 grease at 68 °F (20 °C) and 110 cpm.

** 80cu.in.(1310cc/min) maximum free delivery at 80cpm NLGI-2 grease.

60:1 PM35 Grease Service Packages

Model F336 For 120 lb. open top drum.

Includes the following:

Model F530621	60:1 Ratio pump with cover mounting adapter
Model F1936	Drum cover for 120 lb. drum.
Model F964	Follower Plate for 120 lb. drum
Model F901	Connecting hose installation hook-up kit.

Model F338 For 400 lb. open top drum.

Includes the following:

Model F530611	60:1 Ratio pump with cover mounting adapter
Model F1938	Drum cover for 400 lb. drum.
Model F966	Follower Plate for 400 lb. drum.
Model F901	Connecting hose installation hook-up kit.



Model F338

NOTE: Two-year warranty standard on above pumps. Standard 2" bung bushing supplied with above pumps.

Heavy Duty High Pressure Grease Pump Carts



**Model
F402201+F1301**



Model F402201

60:1 PM35 Grease Cart Packages - 35 lb Pails

PART NO.	F402201	F402201+F1301
PUMPMaster 35 - 60:1 PUMP	F530631	F530631
PAIL COVER	F1934	F1934
FOLLOWER PLATE	F962	F962
DELIVERY HOSE	15' x 1/4" (F873000)	15' x 1/4" (F873000)
GREASE HANDLE	F413077	F413077
GREASE HANDLE SWIVEL	Z-swivel (F1105)	Z-swivel (F1105)
3/8" QUICK AIR COUPLER	F930F06	F930F06
3/8" QUICK AIR NIPPLE	F933M06	F933M06
3/8" MINI FILTER REGULATOR COMBO	F957	F957
3/8" PUMP TO FR COMBO CONNECTOR	F2052	F2052
PUMP TO HOSE BUSHING	F2060	F2060
CARRYING HANDLE	F2020	F2020
TWO WHEEL CART	-	F1301



**Model
F333201+F1303**



**Model
F333201+F1301**

60:1 PM35 Grease Cart Packages - 120 lb Kegs

PART NO.	F333201+F1301	F333201+F1303
PUMPMaster 35 - 60:1 PUMP	F530621	F530621
KEG COVER	F1936	F1936
FOLLOWER PLATE	F964	F964
DELIVERY HOSE	15' x 1/4" (F873000)	15' x 1/4" (F873000)
GREASE HANDLE	F413077	F413077
GREASE HANDLE SWIVEL	Z-swivel (F1105)	Z-swivel (F1105)
3/8" QUICK AIR COUPLER	F930F06	F930F06
3/8" QUICK AIR NIPPLE	F933M06	F933M06
3/8" MINI FILTER REGULATOR COMBO	F957	F957
3/8" PUMP TO FR COMBO CONNECTOR	F2052	F2052
PUMP TO HOSE BUSHING	F2060	F2060
TWO WHEEL CART	F1301	-
FOUR WHEEL CART	-	F1303



Model F335261



Model F311001

60:1 PM35 Grease Cart Packages - 400 lb Drums

CART PART NO.	F335261	F311001
PUMPMaster 35 - 60:1 PUMP	F530611	F530611
DRUM COVER	F1938	F1938
FOLLOWER PLATE	F966	F966
DELIVERY HOSE	15' x 1/4" (F873000)	-
HOSE REEL	-	30' x 1/4" (F1432)
GREASE HANDLE	F413077	F413077
GREASE HANDLE SWIVEL	Z-swivel (F1105)	Z-swivel (F1105)
3/8" QUICK AIR COUPLER	F930F06	F930F06
3/8" QUICK AIR NIPPLE	F933M06	F933M06
3/8" MINI FILTER REGULATOR COMBO	F957	F957
3/8" PUMP TO FR COMBO CONNECTOR	F2052	F2052
PUMP TO HOSE BUSHING	F2060	F2060
X-FRAME DOLLY	-	-
STANDARD DUTY PLATFORM TRUCK	F1307	-
HEAVY DUTY PLATFORM TRUCK	-	F1305

Heavy Duty High Performance Grease Pumps

405 cu. in./min. (13.5 lb./min.)

4.5" Air motor (115mm) - 4" Stroke (100mm)



25:1 Ratio PM45 Heavy Duty Pressure Transfer Pumps - Grease

Moderate pressure, high delivery double acting pumps for transfer of grease up to NLGI-2. Also recommended for use with low viscosity grease in centralized grease systems that do not require a high pressure output and in large distribution systems of high viscosity oils. Pumps are available with tube length to fit commercial 400 lb (185 kg) drums and they are available for flange cover mount to 400 lb (185 kg) open drums using a drum cover.

PM45 Bare Pump Models

Part #	Description
F531211	400 lb. Drum Pump

PM45 Technical Data

Max. air pressure	200 psi (14 bar)
Min. air pressure	20 psi (1.5 bar)
Avg. air consumption*	47 scfm (1,340 NI/min.)
Max. continuous duty delivery**	13.5lb./min. or 405cu.in.(6636cc/Min.)
Max. pressure output (140psi air)	5,000 psi (350 bar)
Air motor diameter	4-1/2" (115 mm)
Suction strain dia. (pump foot)	2.0" (50 mm)
Air inlet thread	1/2"NPT(F)
Pump outlet thread	1/2"NPT(F)
Bung adapter thread	2" (M)

* Maximum air consumption with 70 psi (5 bar) air inlet pressure, NLGI-0 grease at 68 °F (20 °C) and 80 cpm.

** 30lb./min.(14748cc/min.) maximum free delivery.

225 cu. in./min. (7.5 lb./min.)

4.5" Air motor (115mm) - 4" Stroke (100mm)



40:1 Ratio PM45 Heavy Duty High Flow Pumps - Grease

High flow double acting pumps with high pressure delivery for use in lubrication systems that require a combination of high flow and pressure delivery. Pumps can be used with grease up to NLGI-2 viscosity. These pumps can be used in medium length systems that include simultaneous operation outlets. Pumps are available for cover mount to 120 lb (50 kg) and 400 lb (185 kg) open drums and for horizontal and side mount on grease totes, bags and tanks.

PM45 Bare Pump Models

Part Number	Description
F531411	400 lb. Drum Pump
F531421	120 lb. Drum Pump
F531431	Bulk Tote

PM45 Technical Data

Max. air pressure	200 psi (14 bar)
Min. air pressure	20 psi (1.5 bar)
Avg. air consumption*	26.5 scfm (750 NI/min.)
Max. continuous duty delivery**	7.5lb./min. or 225cu.in.(3687cc/Min.)
Max. pressure output (140psi air)	8,000 psi (560 bar)
Air motor diameter	4-1/2" (115 mm)
Suction strain dia. (pump foot)	2.0" (50 mm)
Air inlet thread	1/2"NPT(F)
Pump outlet thread	1/2"NPT(F)
Bung adapter thread	2" (M)

* Maximum air consumption with 70 psi (5 bar) air inlet pressure, NLGI-0 grease at 68 °F (20 °C) and 80 cpm.

** 22lb./min.(10815cc/min.) maximum free delivery.

NOTE: Two-year warranty standard on above pumps. Standard 2" bung bushing supplied with above pumps.

Heavy Duty High Performance Grease Pumps

135 cu. in./min. (4.5 lb./min.)

4.5" Air motor (115mm) - 4" Stroke (100mm)



70:1 Ratio PM45 Heavy Duty High Pressure Pumps - Grease

High pressure double acting pump for use in applications requiring extra pressure output cold temperatures or when low air pressure could limit pump performance. Pumps can be used with grease up to NLGI-2 viscosity. These pumps can be used in large distribution systems that include simultaneous operation outlets. Pumps are available for cover mount to 120 lb (50 kg) and 400 lb (185 kg) open drums and for horizontal and side mount on grease totes, bags and tanks.

PM45 Bare Pump Models

Part #	Description
F531711	400 lb. Drum Pump
F531721	120 lb. Drum Pump
F531731	Bulk Tote

PM45 Technical Data

Max. air pressure	100 psi (7 bar)
Min. air pressure	20 psi (1.5 bar)
Avg. air consumption*	33 scfm (925 NI/min.)
Max. continuous duty delivery**	4.5lb./min. or 135cu.in.(2212cc/Min.)
Max. pressure output (140psi air)	7,000 psi (490 bar)
Air motor diameter	4-1/2" (115 mm)
Suction strain dia. (pump foot)	2.0" (50 mm)
Air inlet thread	1/2"NPT(F)
Pump outlet thread	1/2"NPT(F)
Bung adapter thread	2" (M)

* Maximum air consumption with 70 psi (5 bar) air inlet pressure, NLGI-0 grease at 68 °F (20 °C) and 80 cpm.

** 16.5lb./min.(811cc/min.) maximum free delivery.

PM60 Technical Data

Max. air pressure	100 psi (7 bar)
Min. air pressure	20 psi (1.5 bar)
Avg. air consumption*	35 scfm (1,000 NI/min.)
Max. continuous duty delivery**	5.5lb./min. or 165cu.in.(2703cc/Min.)
Max. pressure output (140psi air)	8,000 psi (560 bar)
Air motor diameter	6" (150 mm)
Suction strain dia. (pump foot)	2.0" (50 mm)
Air inlet thread	1/2"NPT(F)
Pump outlet thread	1/2"NPT(F)
Bung adapter thread	2" (M)

* Maximum air consumption with 70 psi (5 bar) air inlet pressure, NLGI-0 grease at 68 °F (20 °C) and 80 cpm.

** 17.6lb./min.(8652cc/min.) maximum free delivery.

80:1 PM60 Grease Service Packages

For 120lb open top drum

(Former F534820)

Order the following separate:

Model F532821	80:1 Ratio HD pump with cover mounting adapter
Model F418017	Heavy Duty drum cover for 120 lb. drum.
Model F417011	Heavy Duty Follower Plate for 120 lb. drum
Model F534103	Connecting hose installation hook-up kit.

Model F534810 For 400 lb. open top drum.

Includes the following:

Model F532811	80:1 Ratio HD pump with cover mounting adapter
Model F418026	Heavy Duty drum cover for 400 lb. drum.
Model F417009	Heavy Duty Follower Plate for 400 lb. drum
Model F534103	Connecting hose installation hook-up kit.

165 cu. in./min. (5.5 lb./min.)

6" Air motor (150mm) - 4" Stroke (100mm)



80:1 Ratio PM60 Heavy Duty High Performance Pumps - Grease

Very high pressure and high volume delivery double acting pump for use in applications that require extra pressure and volume output and where cold temperatures or low air pressure could limit pump performance. Pumps can be used with grease up to NLGI-2 viscosity. These pumps can be used in large distribution systems that include simultaneous operation outlets. Pumps are available for cover mount to 120 lb (50 kg) and 400 lb (185 kg) open drum and for side mount on grease totes.

PM60 Bare Pump Models

Part #	Description
F532811	400 lb. Drum Pump
F532821	120 lb. Drum Pump

NOTE: Two-year warranty standard on above pumps. Standard 2" bung bushing supplied with above pumps.

Heavy Duty High Performance Grease Pumps

990 cu. in./min. (33 lb./min.)

6" Air motor (150mm) - 4" Stroke (100mm)



12:1 Ratio PM60 Heavy Duty Volume Transfer Pump - Grease

Moderate pressure, very high volume double acting grease pump for use in transfer applications. These pumps can be used with all types of grease up to NLGI-2. Pumps are available for horizontal mounting on grease totes and grease bags and they include an adaptor to fit a 3" cam-lock adaptor. They can be used with 400 lb (185 kg) drums when mounted to air pneumatic inductor.

PM60 Bare Pump Models

Part #	Description
F532131	Bulk Tote w/3" Cam-Lock

PM60 Technical Data

Max. air pressure	100 psi (7 bar)
Min. air pressure	20 psi (1.5 bar)
Avg. air consumption*	39 scfm (1,100 NL/min.)
Max. continuous duty delivery**	33lb./min. or 990cu.in.(16223cc/Min.)
Max. pressure output (140psi air)	1,200 psi (84 bar)
Air motor diameter	6" (150 mm)
Suction strain dia. (pump foot)	2.3-4" (70 mm)
Air inlet thread	1/2"NPT(F)
Pump outlet thread	1"NPT(F)
Bung adapter thread	2" (M)

* Maximum air consumption with 70 psi (5 bar) air inlet pressure, NLGI-0 grease at 68 °F (20 °C) and 80 cpm.

** 88lb./min.(43261cc/min.) maximum free delivery.



Model F534721

Pump System with Pneumatic Inductor - 400 LB Drums - Grease

PM45 & PM60 grease pumps mounted onto an air operated inductor plate for use with high viscosity, hard to pump greases directly from 400 lb drum. When the double lip inductor plate is attached to the lower end of the pump tube, it exerts pneumatic, weight and atmospheric pressure on the material forcing pump priming. The inductor plate also serves as protection against contaminants and eliminates material waste. The inductor system includes guide rods, drum retaining mechanism and a control box with the following features:

- On/ Off control of the pump.
- Up / Down control of the ram for easy drum exchange.
- Two independent air pressure regulators, one for the pump and the other for the power ram cylinders.
- Pump / Ram independent air pressure gauge.
- Empty drum shut-off safety feature.
- Automatic Vacuum release.

Inductor Package Models

Part Number	Description
F534421	PM45 40:1 (Includes Pump F531421)
F534721	PM45 70:1 (Includes Pump F531721)
F534121	PM60 12:1 (Includes Pump F532130)
F534821	PM60 80:1 (Includes Pump F532821)

NOTE: Two-year warranty standard on above pumps. Standard 2" bung bushing supplied with above pumps.

Grease Pump Accessories



Drum Covers

Deluxe Drum Covers:

2" NPTF bung opening, allows mounting a PM3 or a PM3+3 pump to an open top 35 lb pail, 120 lb or a 400 lb drum.

Model F1936

Cover for 35 lb. pail, complete with mounting hardware

Model F1936

Cover for 120 lb. drum, complete with mounting hardware

Model F1938

Cover for 400 lb. drum, complete with mounting hardware

Heavy Duty Drum Covers:

Allows mounting a flange mounted PM45 or PM60 pump to an open top drum.

Model F418017

Cover for 120 lb. drum, complete with mounting hardware

Model F418026

Cover for 400 lb. drum, complete with mounting hardware

Model F360133

Converter for flange type drum cover. Converts flange mount to standard 2" NPTF bung opening, thus permits the use of bung mounted type pumps with Heavy Duty drum cover.



Bung Bushing Adaptors & Cam-Lock

Model F2028 Bung bushing adaptor for PM3 55:1 pressure ratio pumps.

Model F410002 Bung bushing adaptor for PM3+3 60:1 pressure ratio pumps.

Model F609104 Bung bushing adaptor for all PM45 grease pumps and for PM60 80:1 pressure ratio pump.

Model F753110 3" cam-lock adaptor. Allows mounting PM45 and PM60 to tanks, totes and fluid bags fitted with a standard 3" Cam-Lock connection.

Follower Plates

Follower Plates: For PM3 & 3+3 Pumps

Model F962 Follower Plate for 35 lb. pails

Model F964 Follower Plate for 120 lb. kegs

Model F966 Follower Plate for 400 lb. drums

Heavy Duty Follower Plates: For PM45 & PM60 Pumps.

Model F417011 Heavy Duty Follower Plate for 120 lb. kegs

Model F417009 Heavy Duty Follower Plate for 400 lb. drums

Installation Hook-up Kits

Model F903 High pressure connecting hose installation hook-up kit for PM3 55:1 ratio grease pumps. Includes:

Model F801 2' Air hose, 1/4"NPT (M) both ends

Model F930F04 Quick air coupler 1/4"NPT(F)

Model F933M04 Quick air nipple 1/4"NPT (M)

Model F871000 5' high pressure grease hose 1/4"NPT(M) both ends

Model F534103 High pressure connecting hose installation hook-up kit for PM45 & PM60 grease pumps. Includes:

Model F823 5' Air hose, 1/2"NPT (M) both ends

Model F935F08 Quick air coupler 1/2"NPT(F)

Model F936M08 Quick air nipple 1/2"NPT (M)

Model F884 5' high pressure grease hose 3/8"NPT(M) both ends

Model F1981 90° swivel 1/2"NPTF X 1/2"NPTM

Model F539009 Medium pressure connecting hose installation hook-up kit for PM60 12:1 ratio grease pumps. Includes:

Model F823 5' Air hose, 1/2"NPT (M) both ends

Model F935F08 Quick air coupler 1/2"NPT(F)

Model F936M08 Quick air nipple 1/2"NPT (M)

Model F863 5' medium pressure 1" hose 1"NPT(M) both ends

Model F1981 90° swivel 1/2"NPTF X 1/2"NPTM

Specialty Pumps and Accessories

7 G.P.M.

3.0"Stroke (75mm)



1:1 Ratio PM2 Stainless Steel - Oil 3:1 Ratio PM4 Stainless Steel - Oil

To pump any fluid compatible with AISI-316 stainless steel, PTFE (Teflon), and Viton. Air motor divorced from the pump to avoid fluid contamination inside the motor. Hi-tech, long stroke piston pumps for handling water-based fluids as well as other slightly corrosive fluids. Not for use with strong acids. Some fluids that can be handled:

- Alcohol • Benzol • Trichloroethane • Toulene
- Anti-freeze • Detergents • Brake Fluid • Xylene

Pumps not suitable for DEF.

PM2 & PM4 SS Bare Pump Models

Part #	Description
F331120	Universal Stub Pump SS
F333120	Universal Stub Pump SS

PM2 SS Technical Data

Max. air pressure	145 psi (10 bar)
Min. air pressure	20 psi (1.5 bar)
Avg. air consumption	7 cfm
Max. delivery	6.6gal/min. (25 l/Min.)
Max. pressure output	140 psi (10 bar)
Air motor diameter	2" (51 mm)
Air inlet thread	1/4"NPT(F)
Pump outlet thread	3/4"NPT(F)
Fluid inlet	1"NPT(F)
Pump Mounting	Bung/Bracket

PM4 SS Technical Data

Max. air pressure	145 psi (10 bar)
Min. air pressure	20 psi (1.5 bar)
Avg. air consumption	10 cfm
Max. delivery	6.6gal/min. (25 l/Min.)
Max. pressure output	145 psi (10 bar)
Air motor diameter	2-1/2" (60 mm)
Air inlet thread	3/8"NPT(F)
Pump outlet thread	3/4"NPT(F)
Fluid inlet	1"NPT(F)
Pump Mounting	Bung/Bracket

5.25 lb/min.

2.44" Air motor(61.9mm) - 1.63"Stroke (41mm)



26:1 Ratio PM26 High Pressure Pumps - Oil & Grease

These air operated drum pumps can dispense a wide range of lubricants from oil up to an NLGI #2 grease. Available for 120 lb and 400 lb drums.

Features:

- Double-toggle balances pressure on air valve trip mechanism to prevent binding or stalling.
- Corrosion-resistant chrome finish on piston rods alleviates packing wear.
- All steel construction.

PM26 Bare Pump Models

Part Number	Description
39739	120 lb. Drum Pump
39740	400 lb. Drum Pump

PM26 Technical Data

Max. air pressure	200 psi (14 bar)
Min. air pressure	30 psi (2 bar)
Avg. air consumption	7 cfm
Max. delivery	5.25lb/min. or 157cu.in.(2572cc/Min.)
Max. pressure output(140psi air)	5,200 psi (353 bar)
Air motor diameter	2-7/16" (61.9 mm)
Air inlet thread	1/4"NPT(F)
Pump outlet thread	3/8"NPT(F)
Pump Mounting	Flange (Bung optional*)

*NOTE: Bung adapter must be ordered separately.

PM26 Accessories

Description	Part Number
Bung Adapter	ADA10121B
120 lb. Drum Cover	338371
400 lb. Drum Cover	338163
120 lb. Follower Plate	200225
400 lb. Follower Plate	338911

Accessories

Air Regulator with Gauge



P.N.	F1192G	F973	F1194G	F1196G
SIZE	1/4"	3/8"	1/2"	3/4"

Filters with Auto Drain



P.N.	F6022	F975	F6024MD	F982
SIZE	1/4"	3/8"	1/2"	3/4"

Lubricators



P.N.	F6062
SIZE	1/4"

Filter/Regulator/Lubricator with Auto Drain



P.N.	F6282	F984	F985	F986
SIZE	1/4"	3/8"	1/2"	3/4"
BRACKET	F987	F987	F988	F988

Filter/Regulator Combo Compact Units with Auto Drain



P.N.	F956	F957	F958	F952
SIZE	1/4"	3/8"	1/2"	3/4"
BRACKET	F987	F987	F988	F988

Mini Units & Mini Combo Units



P.N.	F991	F992	F993
SIZE	1/4" REG	1/4" LUB	1/4" FILTER
BRACKET	F996	F996	F996
P.N.	F995	F955	
SIZE	1/4" F.R.L. PACKAGE	1/4" FILTER REG	
BRACKET	F996	F996	

Drum Heater Insulated Blankets

Model 37506 Fits size 120 lb. drums (15 gal/57 liter)

Model 55286 Fits size 400 lb. drums (55 gal/208 liter)

General Description

Drum heater blankets protect products by maintaining desired temperature through an evenly heated area. Includes an adjustable thermostatic controller that allows setting and managing the material temperatures.

Technical Data

Approx Temp: 160°F+/-10°(71°C+/-5°)	Voltage: 120VAC
Model 37506	Model 55286
Wattage: 400(+/-5%)	Wattage: 960(+/-5%)
Amps: 3.33(+/-5%)	Amps: 8.00(+/-5%)



Refer to the following documents for more info:

+ Datasheet #35745:
Drum Heater Blankets



F2074



F2013

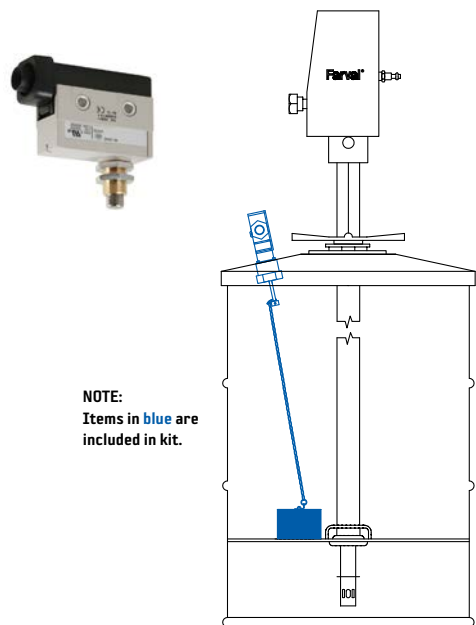
Shut Off Valves					
High Pressure Needle Valves 10,000 psi		Medium Pressure Ball Valves 2,000 psi		Low Pressure Ball Valves 600 psi	
F2077	1/2"NPTF	F2074	1/2"NPTF	F2013	1/4"NPTF
F2089	3/4"NPTF	F2083	3/4"NPTF	F2088	1/2"NPTF
F2093	1"NPTF	F2090	1"NPTF	F2091	3/4"NPTF
		F2082	1-1/2"NPTF	F2084	1"NPTF

Empty Containers

Containers Sizes Available:

Model 37307	35 lb. plastic pail with handle
Model 37153	120 lb. /16 gallon steel drum
Model 36490	400 lb./55 gallon steel drum

Accessories



Low Level Switch Kit for 120/400 lb. Drums		
PART NUMBER	SIZE	RATING
LC10243	120 lb.	NEMA 1
LC11036	400 lb.	NEMA 1
LC13689C	120 lb.	NEMA 4X
LC13689C-1	400 lb.	NEMA 4X
39406	120 lb.	NEMA 7/9 XP
39406-1	400 lb.	NEMA 7/9 XP

Kit includes all parts to install low level switch on a drum pump. For 120 lb. drums (15 gal/57 liter) & for 400 lb. drums (55 gal/208 liter).

- Notes:
- (1) Requires cover and follower plate - order separately.
 - (2) Customer/user to provide 15/16" hole in cover.
 - (3) Can be used with any MFG pump.



Runaway Pump Protection Valve	
Model 35647	For 2" - 3-1/2" Air Motors
Model 35647-1	For 4" - 6" Air Motors

This device is to terminate operation of a reciprocating type air motor in the event of a ruptured outlet hose or the pump runs out of media.

For compressed air use only.

Operating Pressure Range.....20 - 175 p.s.i. (1.4 - 12 bar)

Temperature Range.....0° to 180° F (-18° to 82° C)



Pump Hoist
Model F391022
Designed to lift BDI pumps for drum changing. Lift unit consists of a steel tube that rises in a cast iron bearing under air pressure. Steel top beam has 360° swivel action at any height, and is adjustable in length. Can be used with other drum pumps by utilizing a strap.
Maximum height raised: 104"
Minimuim height lowered: 64"

Electric Grease Barrel Pumps



120 lb. Electric Barrel Pump



400 lb. Electric Barrel Pump

Description

Bijur Delimon's AC or DC Electric Barrel Pumps will replace the air or hydraulic operated pumps now used for lubrication systems on mobile or stationary equipment. Installation is cleaner - no air or hydraulic lines to install/leak. Simply wire into the machines power supply. Pressure rated to 300 bar (4350 psi). Will fit original refinery 120 and 400 lb drums (50kg & 185kg). Optional drum covers and follower plates are available. (Bung Adapter F360002 is included with pumps.)

Operation

The pump end (bottom) consists of a hardened steel bushing, through which the piston runs. As the piston strokes down, grease is pushed past the check valve ball and out through the extruded discharge holes in the pump stem. As the piston strokes up, the check valve prevents drawback, and a vacuum is created inside the bushing. When the piston uncovers the suction holes in the bushing, another charge of grease is drawn in through the suction ports on the bottom of the stem and into the bushing. The cycle then repeats.

Electric Barrel Pump Specifications

Standard Tube Lengths/ Fits Drum Size¹		120 lb. (50 kg), 400 lb. (185 kg)
Voltages		24 VDC 115/230 VAC (50/60 Hz) Single Phase
Amp Draw	24VDC²	15 Amp draw @ 3500psi 20°C (68°F) with NLGI #2
	115VAC³	4 Amp draw @ 3500psi 20°C (68°F) with NLGI #2
	220VAC⁴	2 Amp draw @ 3500psi 20°C (68°F) with NLGI #2
Lubrication Flow⁵		150cc/minute @ 140 bar, +20°C (9 cu.in. @ 2030 psi, +68°F)
Pump Pressure		300 bar max/240 bar recommended (4350psi / 3480 psi)
Systems⁶	Progressive	Pressure Relief Valve Included
	Injector	Vent Valve & Pressure Relief Valve Included
Relief Valve Pressure		240 bar / 3500 psi
Vent Valve Voltages		24 VDC 115/230 VAC (50/60 Hz) Single Phase
Operating Temperature⁷		-25°C to +60°C (-13°F to +140°F)
Pressure Gauge		350 bar Included (5000 psi)
Lube Outlet Port		1/2" NPSF (F)
Lubricants⁸		NLGI #000 to #2
Rating		IP66
Noise Level⁹		75dB

1 Bung Bushing F360002 is included with pumps.

2 16 Amp draw spike. Recommend 40A fuse max.

3 5 Amp draw spike. Recommend 7A fuse max.

4 2.5 Amp draw spike. Recommend 4A fuse max.

5 Flow rate is for 60 Hz motors. 60 Hz motor can operate on 50 Hz but pump flow is reduced.

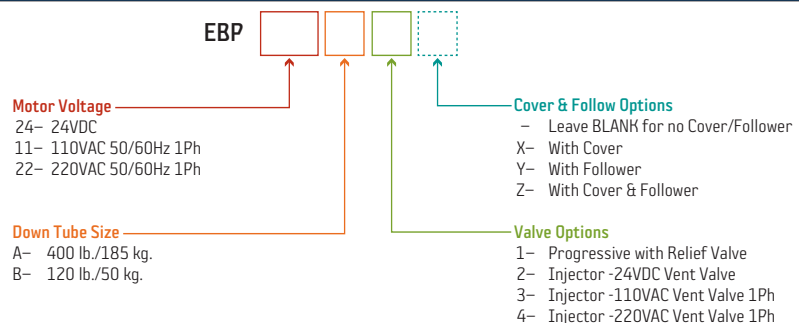
6 Suitable for Dualine system when paired with a hydraulic or electric reversing valve.

7 Lower temperatures may be possible with suitable grease and/or heated reservoir/piping.

8 EBP will also work pumping oils.

9 Noise level measured at 3' (1 m) from the pump.

How to Order



Refer to the following documents for more info:

+ Datasheet #36922:
Electric Barrel Pump

NOTE: Lube containers sold separate.
(see page 18)

Industrial Lubrication Pumps, Hose Reels & Accessories



Manual Pumps and Accessories

Manual Grease Fill Pump Kits

- Model 37303** Manual Grease Fill Pump Kit (120 lb. drum)
Model 37304 Manual Grease Fill Pump Kit (35 lb. pail)

Use to fill grease reservoirs & grease guns quickly and efficiently. Product mounts directly to original 120 lb. drum & 35 lb. pail.

Included Items: Cover, Follower Plate, Loader Extension, Loader Coupler. Also included is 6 foot hose with all fittings required to attach to pump and two fill couplers supplied for grease reservoirs - one female quick coupler for hydraulic stud (used on AeroFlow/BL3/Dynamis-Dynamis Maxx/TTN reservoirs), one for standard fill stud (used on Multiport/CS2000 and TP type reservoirs).

Develops 500 psi Delivery: 1 lb. per 6 strokes.



Model 37303

Heavy Duty Original Container Units

Model F1984

Heavy duty hand operated high pressure (5,000 psi) grease pump unit. Fits 35 lb. pail. Complete with pump, cover, 5' hose, pipe with coupler, carry handle and follower plate. Capacity per stroke: 0.06 ounces.



Model F1984



Model F1243

Transfer Pumps

Heavy duty, high quality hand-operated transfer pumps. For light, medium and heavy automotive, petroleum and industrial products.

Model F1243

Has Viton® seals, useable with alcohols, degreasers, solvents, oils and anti-freeze. Long, curved removable steel spout with garden hose threads. Output is .45 liters per stroke.



Model F1996



Model F1995

Bucket Pumps

Bucket pumps include a 35 lb leak proof, all steel oval shaped bucket with carrying handle and foot rest for easy handling and stability.

Model F1996

Multi pressure grease bucket pump. High pressure 6,000 psi lever action grease pump. Oval shaped 35 lb steel container with foot rest. Includes 7' grease hose and hydraulic coupler. Adjustable pressure and volume. Capacity per stroke: 0.04, 0.03, 0.02 pound (depending on the position of the lever).

Model F1995

3.6 gallon oil bucket pump for dispensing high viscosity lubricants. Includes a medium pressure lever action pump with a 5' rubber hose with shut off valve and 135° angled nozzle.

Portable Carts: Trucks • Dollies • Bases

- Model F1301** 2 wheel dolly - for 35, 50 and 120 lb. drum.
Model F1302 Band type dolly for 35 lb. pail.
Model F1303 4 wheel cart - for 120 lb. drums. Similar to F1301.
Model F1304 Band type dolly for 120 lb. pail.
Model F1305 Heavy duty 3 wheel platform truck for 55 gallon drum. Swivel wheel with locking brake. Will hold drum and hose reel.
Model F1306 X-frame type dolly for 400 lb. drum.
Model F1307 Standard Duty platform truck for 400 lb drums.



Hose Reels

Features That Make The Difference



Features

Double pedestal side supports and hose guide arms

- Reel is supported on both sides, gusset-reinforced pedestals and arms.
- The pedestal arms stay rigid—no bending, even when the hose is pulled at an angle.
- Less vibration, less bending—longer life.
- Hose is guided on both sides, without side to side bending—less wear and tear on both reel and hose.
- Guide arms are adjustable to any of three different mounting positions to provide the ideal configuration for wall, ceiling, floor, pit or truck mounting.

Heavy-duty construction

- Heavy gauge plate steel.
- Welded, with gussets, for additional strength and rigidity.

Hardened shaft and corrosive-proof swivel

- Extended leak-proof seal life.

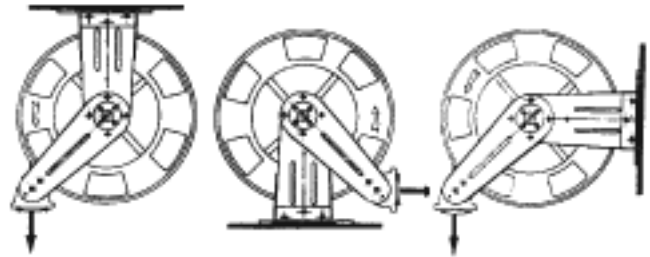
Full flow porting

- Fully ported hub—no flow restrictions. Maximum fluid delivery for faster dispensing.

Permanently lubricated bearings

- Positive reel recoil every time.
- Reduced maintenance, less downtime.
- Prolongs reel life.

Universal Installation



CM
Ceiling Mount

RF
Rear Floor

SR
Side Roller

Compact narrow design

- The narrow design and easily rotated guide arm virtually solve all installation problems.
- Reels are shipped in the CM position and can be easily changed on site.
- Engineered to save installation space.

Heavy-duty latch mechanism

- Non sparking.
- Positive, audible hose position lock.

Trouble-free floating reel spring

- Enclosed spring.
- Complete canister can be removed and replaced.
- No accidental fly-back damage.

Conical hose stopper

- To avoid striking against other objects.

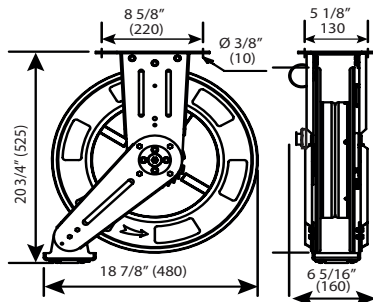
Sinterized powder coated

- High resistance against wear.

Parts and labor warranty

- Two-year warranty.

Standard Reels



Dimensions Inches (mm)

Standard Capacity 1400 Series

1400 Series heavy-duty, quality hose reel engineered to save space

Heavy-duty design

- The narrow design and easily rotated guide arm virtually solve all installation problems.
- Holds up to 40' of 1/2" Hose
- For 1/4", 3/8" and 1/2" I.D. Hose
- Swivel inlet: 1/2" NPT(F) Medium pressure; 1/4" NPT(F) High pressure

Medium Pressure - Oils, Fluids

1 - Wire Braid Hose (2000 psi)

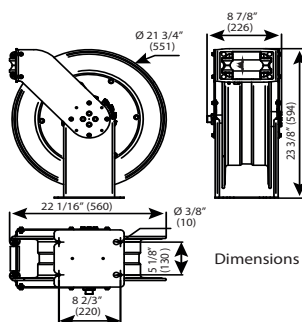
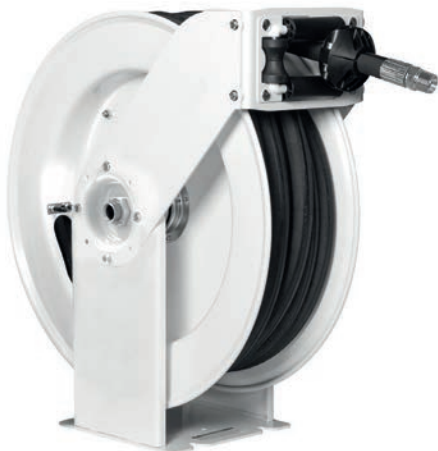
F1428	30'	1/2"	F851
F1426	40'	1/2"	F853
F1402	Reel only with swivel (3000 psi) - no hose		

High Pressure - Grease

2 - Wire Braid Hose (5000 psi)

F1432	30'	1/4"	F876
F1435	50'	1/4"	F878
F1403	Reel only with swivel (8000 psi) - no hose		

* Reels include inlet swivel, models with hose include hose stop. See page 22 for inlet connecting hoses.



Dimensions Inches (mm)

Heavy duty 505 Double Pedestal Hose Reel

- Very tough construction able to stand regular use and abuse in Intensive Duty applications.
- Fatigue resistant steel spring for years of durable performance
- Spool mounted on two permanently lubricated and sealed ball bearings to reduce torque load on spring for smooth retraction and longer life.
- Large effective radial latching area for easier operation.
- Hose guide arm can be placed in different positions to accommodate any method of mounting.
- Narrow footprint allows mounting more reels on the same surface.

Lubricants

F505221	50'	3/4"	3/4" I.D.	1/4 NPTM	1250 psi
F505002	Reel only with swivel - no hose				

High Pressure Grease & Hydraulic Fluid

F505330	75'	3/8"	3/8" I.D.	3/8 NPTM	4000 psi
F505014	Reel only with swivel - no hose				

Reel includes inlet swivel, reel with hose includes hose stop. Inlet connecting hose: not included. See page 22.

Heavy-Duty Large Capacity Reels

Heavy-Duty 504 Series

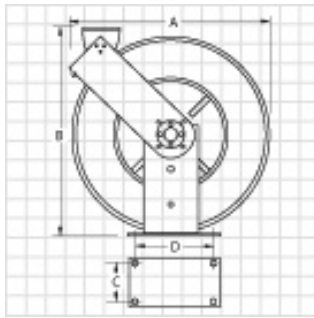
Extra heavy-duty design 504 series*

- Welded base and dual side support construction.
- Heavier, thicker gauge steel. 50% heavier than our standard capacity series reels.
- Dual adjustable outlet arms. Extra strength tie bar construction.
- Heavy-duty roller outlet. Assembled with 3 plates of steel.
- Easy to mount. Same bolt hole pattern as our standard capacity series reels.

Holds up to 50' of 1/2" I.D. Hose

For use with 1/4", 3/8" and 1/2" I.D. Hose

Swivel inlet: 1/2" NPT(F) Low pressure
1/2" NPT(F) Medium pressure
1/4" NPT(F) High pressure



A: 21-1/2" (542mm)

B: 21-7/16" (545mm)

C: 5-1/8" (130mm)

D: 8-2/3" (220mm)



Reel includes inlet swivel

Reel with hose includes hose stop and 30" inlet hose.

Low Pressure - Air, Water

Reel Model	Hose Model	Length	Hose I.D.	psi	Hose Stop	Notes
F504151	F829	50'	3/8"	300	F2024	Complete Assembly
F504150	F830	50'	1/2"	300	F2026	Complete Assembly
F504159	Reel only with swivel - no hose					

Medium Pressure - Oil, Fluids

Reel Model	Hose Model	Length	Hose I.D.	psi	Hose Stop	Notes
F504250	F855	50'	1/2"	2000	F2026	Complete Assembly
F504259	Reel only with swivel - no hose					

High Pressure - Grease

Reel Model	Hose Model	Length	Hose I.D.	psi	Hose Stop	Notes
F504350	F892	50'	1/4"	5000	F2024	Complete Assembly
F504351	F893	50'	3/8"	4000	F2024	Complete Assembly
F504359	Reel only with swivel - no hose					

*Reels include inlet swivel, models with hose include hose stop. See page 22 for inlet connecting hoses.

Industrial Lubrication Pumps, Hose Reels & Accessories



Reel Accessories & Control Valves

Hose Stops



Model	For Hose I.D.
F2022	1/4"
F2024	3/8"
F2026	1/2"

Inlet Connecting Hoses

Inlet hoses are used between reel and permanent plumbing, especially where vibration is present. All inlet Hoses are 30" long.

Model	Hose I.D.	Hose Ends	psi
F822	1/2"	1/2" NPT	300
F845	1/2"	1/2" NPT	2500
F883	3/8"	3/8" NPT	4000

Swivels & Outlets - High Pressure



F1105



F1108



F1120



F1124

Model	Type	Threads
F1104	"Z" Inlet Swivel	1/4" NPT x 1/2"-27M
F1105	"Z" Inlet Swivel	1/4" NPT x 1/4" NPT(F)
F1108	Straight Swivel	1/4" NPT X 1/2" NPT
F1109	Straight Swivel	1/4" NPT X 1/2" NPT
F1120	Curved outlet pipe	1/8" NPT
F1124	H.D. 3 jaw hydraulic coupler (air power equipment only)	1/8" NPT(F)

Drum Tie Down Kits



Model	Size
F2440	Secures 120 lb. Drum /16 Gal. Keg
F2450	Secures 400 lb. Drum /55 Gal. Keg

Pump, follower plate, drum cover and drum are not included.

Control Valves - Oil



F363114



F363116



F363118

Model	Service	Inlet Thread	Outlet	Description
F363118	Oil/ATF	1/2" NPT(F)	F1135	Flex Hose
F363114			F1126	Outlet 90°
F363116			F1139	Outlet 60°

Electronic Metered Control Valves - Oil



F365532



F365534



F365536

Model	Service	Inlet Thread	Outlet	Description
F365532	Oil/ATF	1/2" BSP(F)	F369223	Flex Hose
F365534		1/2" NPT(F)	F369227	Flex Hose Outlet 90°
F365536		1/2" NPT(F)	F369231	Rigid Outlet 60°

In Line Meter with Digital Display

1/2" aluminum in line meter - 8 GPM

F366000

1/2" in line meter with aluminum measure chamber for use with oils, gear lube and water based solutions (antifreeze, windshield wash). Maximum working pressure: 1,450 psi. +/- 0.5 % accuracy. Works with two AAA 1.5 V alkaline batteries.



Model F366000

Control Valves & Grease Guns

High Pressure Grease Control Handles



F413077



F413080

Model	Inlet	Swivel	Outlet	Coupler
F413077	1/4"NPT(F)	No	F1120	F1124
F413080	1/4"NPT(F)	F1105	F1120	F1124



F1177

F411103

High Pressure Grease Meter

F1177

Heavy duty high pressure grease control handle with digital meter. Includes F1104 Z swivel 1/4" NPT(F), HP wire braid flex hose and HP grease coupler. Ergonomic design for comfortable and smooth operation.

F411103

Heavy duty high pressure digital display electronic grease meter. Measures in ounces. Easy to replace (2) AAA batteries. 1/8" FPT inlet and outlet. Flow rate is 36 oz./min. Max working pressure is 500 bar (7100 psi). Burst pressure is 1000 bar (14,200 psi).

Technical Information

Max. Working Pressure	500 bar (7100 psi)
Min. Rupture Pressure	1000 bar (14,200 psi)
Flow Rate	-> 1000 gr/min (36 oz./min.)
Accuracy (after field calibration)	+ 2%
Battery duration	1000h
Weight	3 lbs. (1.4 kg)

Lever Action Grease Guns



F1205

Universal grease guns to be used with 14 oz (400 g) grease cartridges or with bulk grease. Bulk grease loading by suction or using a filler pump.
Maximum working pressure: 7,500 psi (500 bar).

Model	Description
F1200	Standard duty grease gun complete with rigid pipe outlet and 3 jaw coupler; includes port for optional filler fitting.
F1205	Heavy-Duty gun complete with rigid pipe outlet and 3 jaw coupler; also includes filler fitting and vinyl handle grip.
F1210	Professional Series gun with variable stroke handle for use in heavy-duty constant use applications; also includes filler fitting, air bleeder valve, rigid pipe outlet with 3 jaw coupler, vinyl handle grip and removable valve checks.

Professional Pistol-Grip Grease Guns



F1222

Model	Description
F1222	Heavy duty high pressure cast iron head. Straight outlet pipe and coupler with ball check and hardened jaws. Removable valve checks for ease of maintenance. Air bleeder valve. Filler fitting for 3-way loading. Heavy duty barrel with large threads and rubber seal. Heavy duty rod, spring and follower. One hand action for hard to reach fittings. Metallic baked finish. Zinc plated handle and linkage. Vinyl handle grip. Capacity per stroke: 0.04 ounce.

Air Operated Grease Guns

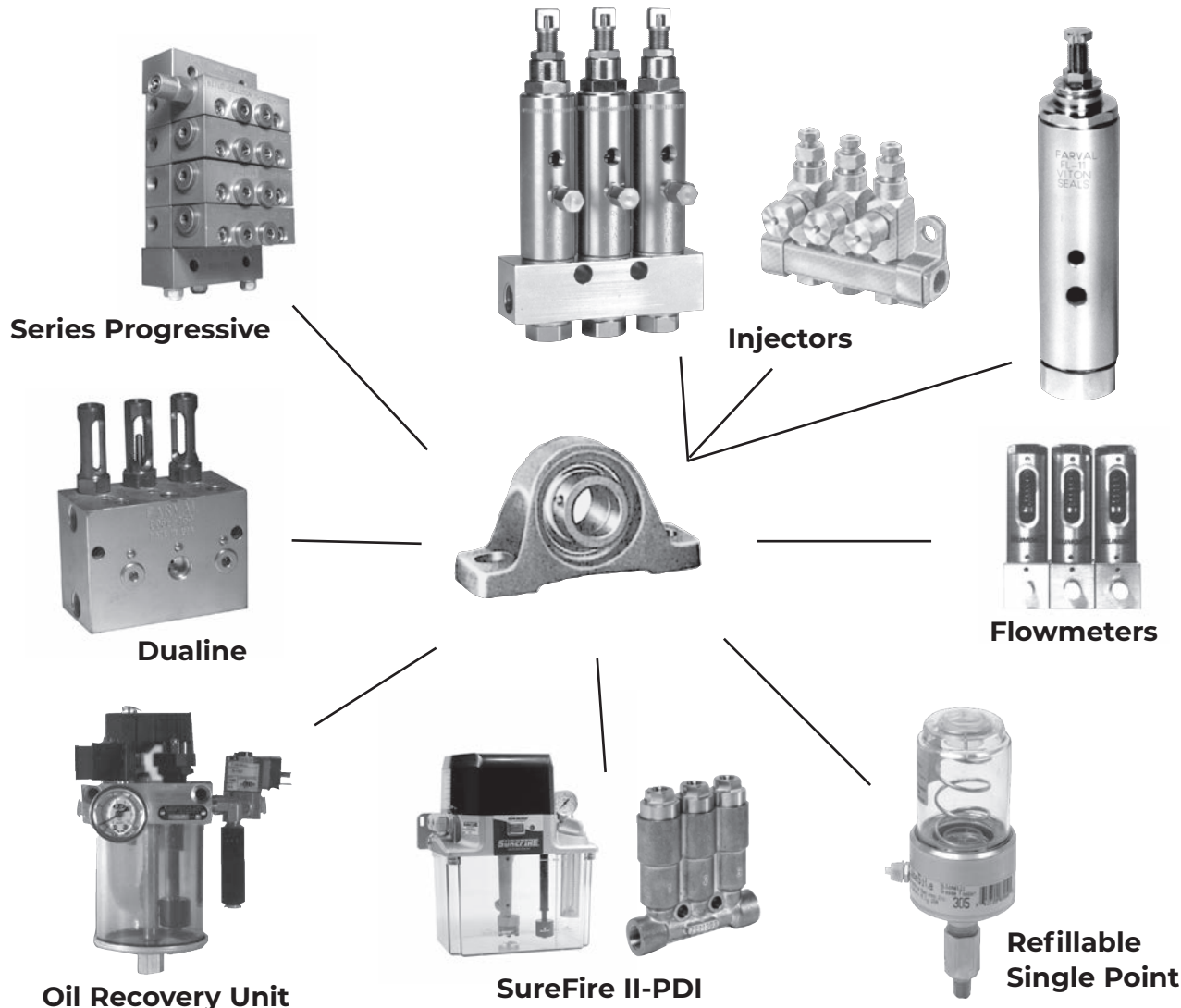


F1233

F1235

Model	Description
F1233	PROFESSIONAL GUN SERIES - SINGLE SHOT Air operated, 60:1 pressure ratio grease gun. Uses standard 14 oz grease cartridges. Combination bleeder valve and filler fitting. 3-way loading. Heavy-Duty rod, spring and follower. Curved outlet pipe and coupler with ball check and hardened jaws. Heavy-Duty barrel with large threads and O-ring seal. Air connection: 1/4" NPTF. Trigger shots per oz delivered: 30.
F1235	SPECIAL INDUSTRIAL SERIES - SINGLE SHOT. Air operated, 60:1 pressure ratio grease gun. Unique, exclusive air powered follower plate, ideal for heavy greases. Large 33 1/2 oz capacity heavy duty knurled barrel. Filler fitting for 2-way loading. Wire braid flex hose extension and coupler. Air connection: 1/4" NPTF. Trigger shots per oz delivered: 30.

Whatever your automatic lube requirement... We have the solution!



Let 90+ Years Of Experience Design Your Next Lube System

BDI has been a manufacturer of automatic lubricating systems for over 90 years. We offer a complete line of pumps, valves, controllers, and accessories. Our pump line includes manual, air, electric, and hydraulic actuated models. Our valve offering is the most comprehensive in the industry. We manufacture oil and grease Dualine valves, series progressive modular valves, and injectors. We also offer air/oil mixing modules, oil flow meters, and single point lubricators.

BIJUR DELIMON INTERNATIONAL
2685 Airport Road • Kinston, NC 28504
Tel. 800-227-1063 • Fax: 252-527-9232
WWW.BIJURDELIMON.COM

Your local distributor: